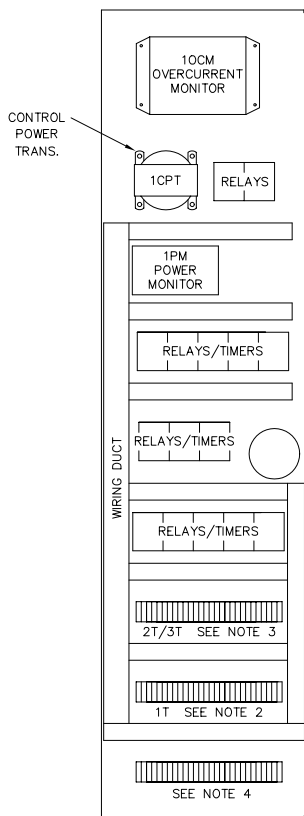
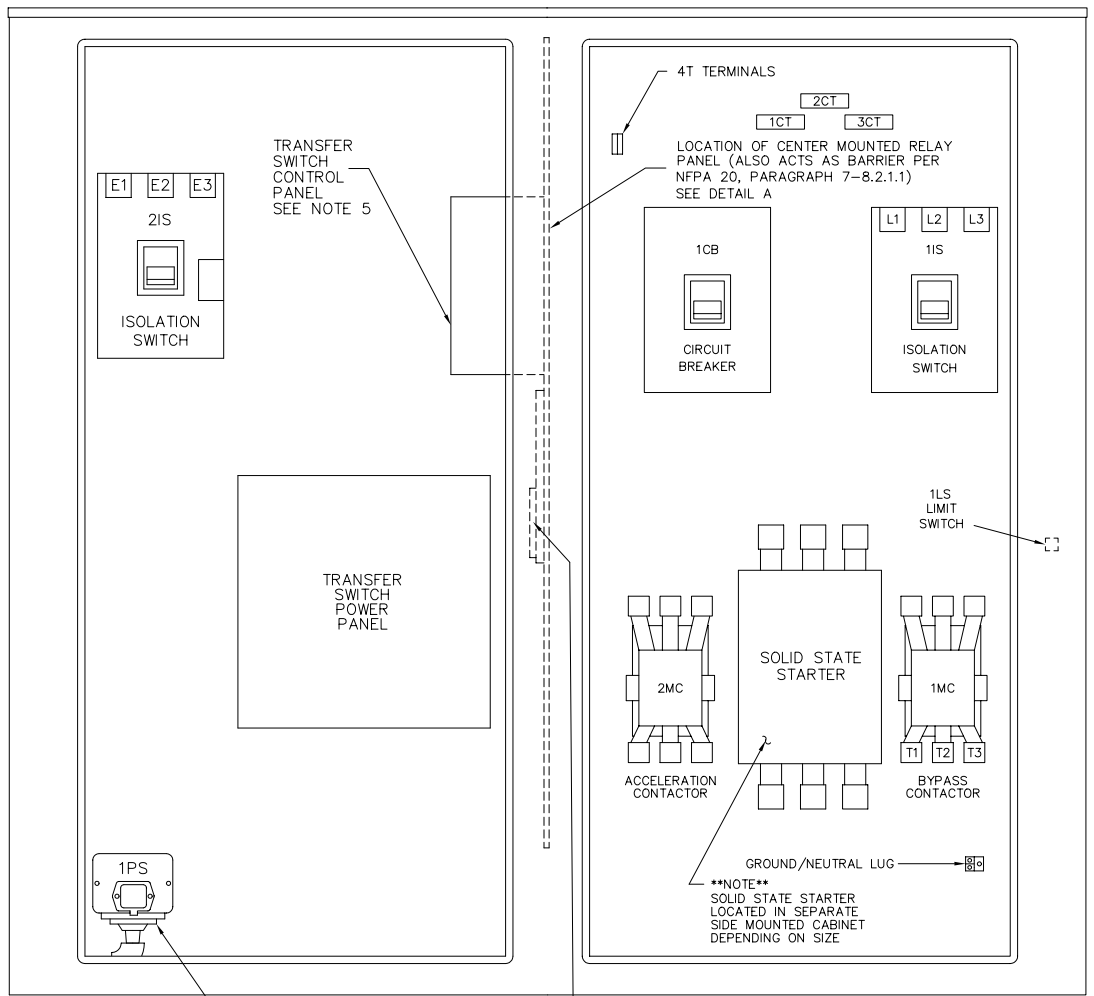


1T*
FIELD
TERMINALS

- 1 } 1
- 2 } 2 } N.O. CONTACT. OPENS ON LOSS OF CONTROLLER POWER
- 3 } 3
- 4 } 4 } N.C. CONTACT. CLOSSES ON LOSS OF CONTROLLER POWER
- 5 } 5
- 6 } 6 } N.O. CONTACT. CLOSSES WHEN PUMP RUNNING
- 7 } 7
- 8 } 8 } N.C. CONTACT. OPENS WHEN PUMP RUNNING
- 9 } 9
- 10 } 10 } REMOTE START. PUMP WILL START WHEN SWITCH CLOSES
- 11
- 12
- 13
- 14
- 15
- 16
- 17
- 18 } 18
- 19 } 19 } N.O. CONTACT. CLOSSES ON PHASE REVERSAL
- 20 } 20 } N.C. CONTACT. OPENS ON PHASE REVERSAL
- 21 } 21
- 22 } 22 } N.O. CONTACT. OPENS ON MOTOR OVERLOAD
- 23 } 23 } N.C. CONTACT. CLOSSES ON MOTOR OVERLOAD



DETAIL A
CENTER MOUNTED
RELAY PANEL

NOTES:

1. POWER MONITOR SIGNALS ANY OF THE FOLLOWING FAILURES:
LOW VOLTAGE
LOSS OF VOLTAGE
PHASE REVERSAL
- * 2. 1T FIELD TERMINALS ARE LOCATED AT BOTTOM OF SIDE MOUNTED RELAY PANEL. SEE DETAIL A
3. 2T, 3T & MANUAL STOP JUMPER ARE LOCATED IN THIS AREA.
4. EXTRA (OPTIONAL) TERMINALS ARE LOCATED IN THIS AREA.
5. SEE ASCO OPERATION MANUAL FOR LOCATION OF DIP SWITCHES.

- G } EMERGENCY ISOLATION SWITCH OPEN
- H }
- J } TRANSFER SWITCH IN EMERGENCY POSITION
- K }
- L } OPEN FOR ENGINE START
- M }
- N } CLOSE FOR ENGINE START

MAXIMUM MOTOR HORSEPOWER	VOLTS AC					PRIMARY WIRE SIZE	
	200V	208V	220V - 240V	380V - 415V	440V - 480V	LINE TERMINAL WIRE SIZE PER PHASE	SERVICE ENTRANCE GROUND LUG WIRE SIZE
25 HP	25 HP	30 HP	50 HP	60 HP	#14-1/0 AWG	(2) #10-1/0 AWG	
40 HP	40 HP	50 HP	75 HP	100 HP	#4-4/0 AWG	(2) #10-1/0 AWG	
60 HP	75 HP	75 HP	125 HP	150 HP	#4-350 MCM	(2) #10-1/0 AWG	
100 HP	125 HP	125 HP	200 HP	250 HP	(2) #3/0-250 MCM	(2) #10-1/0 AWG	
150 HP	150 HP	200 HP	300 HP	400 HP	(2) #3/0-350 MCM	(2) #6-250 MCM	

	DRAWN SR	5-22-98	METRON, INC. DENVER, CO.
	CHECK KH	5-22-98	
	APPD X.B.	5-22-98	
INTERNAL LAYOUT & EXTERNAL HOOKUP MODEL M700, SOFT START/STOP, UTILITY/GEN-SET ELECTRIC FIRE PUMP CONTROLLER WITH ASCO TRANSFER SWITCH, GROUP 1			CH33047C
			SCALE N.T.S SHEET 1 OF 1